

2022 EXPEDITION® LE

A hybrid touring sport-utility vehicle with premium features for off-trail exploration and on-trail cruises.



EXPEDITION® LE
900 ACE™ TURBO SHOWN

// WHAT'S NEW

- High-quality HPG shock package
- Two color options

// PACKAGE HIGHLIGHTS

- Rotax® 600R E-TEC®, 900 ACE™ Turbo – 150 and 900 ACE™ engines
- 20 in. wide Multi-LinQ plate with 125 lb/56.7 kg cargo capacity
- 4.5 in. digital display
- RAS™ 3 front suspension
- SC™-5U articulating rear suspension with locking mechanism (no tool required)
- Air radiator with fan
- Deep-snow running boards with large openings
- Removable passenger seat with heated grips
- Hitch receiver with 1,500 lb/680 kg towing capacity when equipped with an HD rear bumper. (1,200 lb/544 kg std.)
- High-capacity battery
- Easy-shift transmission (H-L-N) with RER™ electronic reverse (2-stroke)/electro-mechanical reverse (4-stroke)
- 23 in. ultra-high windshield with side deflectors
- Pivoting mirrors
- Pilot 7.4 skis
- Heated driver's visor power outlet
- Low handlebar strap
- pDrive™ clutch
- RF D.E.S.S.™ key

ROTAX® ENGINE	600R E-TEC®	900 ACE™ TURBO – 150	900 ACE™
Engine details	Liquid-cooled, two-stroke, eRAVE™	Liquid-cooled, four-stroke D.O.H.C., dry sump, turbocharged	Liquid-cooled, four-stroke D.O.H.C., dry sump
Horsepower	125	150	95
Cylinders – Displacement	2 – 599.4 cc	3 – 899 cc	3 – 899 cc
Bore – Stroke	72.3 mm – 73 mm	73 mm – 69.7 mm	73 mm – 69.7 mm
Carburation	E-TEC® direct injection	EFI	EFI
Fuel type – Octane	Premium unleaded – 91	Premium unleaded – 91	Regular unleaded – 87
Fuel tank	42 L/11.1 US gal	42 L/11.1 US gal	42 L/11.1 US gal
Oil tank capacity	3.3 L/3.5 qt	3.3 L/3.5 qt	3.3 L/3.5 qt

POWERTRAIN	600R E-TEC®	900 ACE™ TURBO – 150	900 ACE™
Drive clutch	pDrive™ with clickers	pDrive™	pDrive™ with slider shoes
Driven clutch	QRS	QRS Vent	QRS
Drive sprocket pitch	73 mm/2.86 in.	73 mm/2.86 in.	73 mm/2.86 in.

DRY WEIGHT	600R E-TEC®	900 ACE™ TURBO – 150	900 ACE™
Dry weight	280 kg/616 lb	304 kg/669 lb	290 kg/639 lb

DIMENSIONS	600R E-TEC®	900 ACE™ TURBO – 150	900 ACE™
Overall vehicle length		3,256 mm/128.2 in.	
Overall vehicle width		1,200 to 1,240 mm/47.7 to 48.8 in.	
Overall vehicle height		1,513 mm/59.6 in.	
Ski stance		975 or 1,020 mm/38.4 or 40.2 in.	
Track (Length x Width x Profile)		Silent Cobra WT: 154 x 20 x 1.5 in.	

COLOR

Neo Yellow / Black

Black

SUSPENSION

Front suspension	RAS™ 3
Front shock	HPG™
Front suspension travel	220 mm/8.7 in.
Rear suspension	SC™-5U
Center shock	HPG™
Rear shock	HPG™
Rear suspension travel	239 mm/9.4 in.

FEATURES

Frame	REV® Gen4
Bodywork	Wide design
Skis	Pilot™ 7.4
Seating	2-up modular with underseat storage
Handlebar	U-shaped aluminum with J-hooks/ Low grab handle
Riser block height	145 mm/5.7 in.
Starter	Electric
Reverse	RER™ (2-stroke) Electro-mechanic (4-stroke)
Air radiator	High-efficiency w/ fan (4-stroke) Fan (2-stroke)
Brake system	Brembo brake with stainless-steel braided brake line
Heated throttle lever/grips	Standard (driver and passenger)
Gauge type	4.5 in. digital display
Windshield	585 mm/23 in. with mirrors
Runner – Carbide	Square 3/8 – 4 in.
Bumpers (front/rear)	Heavy-duty/Hitch receiver

// FEATURE HIGHLIGHTS



1 Rotax® 900 ACE™ Turbo – 150 engine

With a Rotax-built turbocharger specifically designed for the 900 ACE engine, riders get the technology they love with the reliable, powerful performance they demand in one advanced engine package.



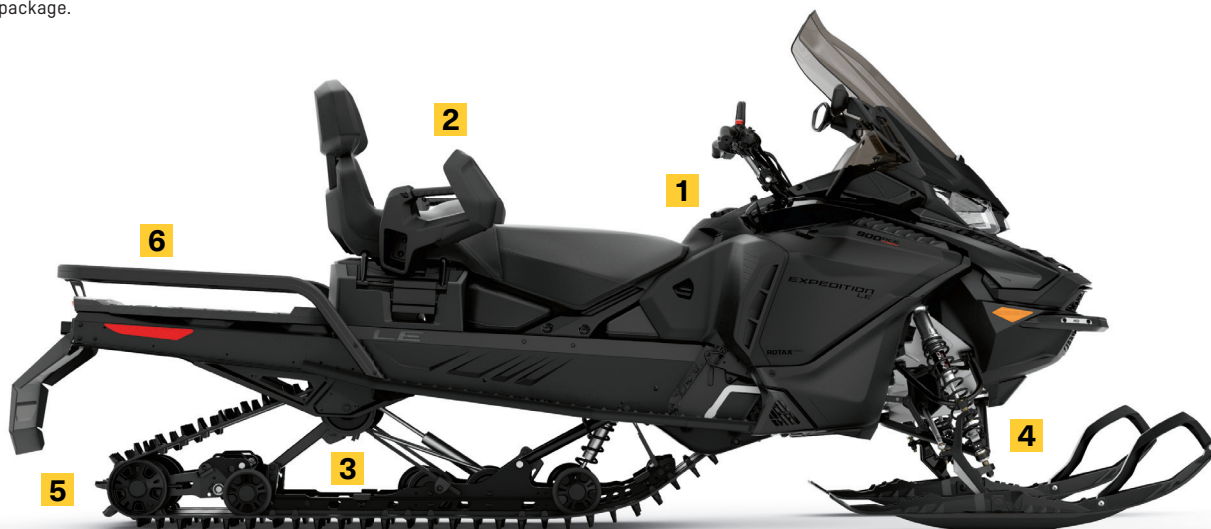
2 Utility 2-up utility seat

The ideal combination of comfort and convenience. Driver and passenger seat offering comfort and maneuverability for the driver, and convenience and protection for the passenger. Shielded and heated passenger hand grips.



3 SC™-5U articulating rear suspension

The articulated rail maximizes deep-snow traction in reverse, and its toolless locking mechanism is ideal for towing.

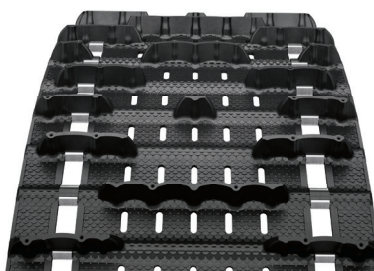


EXPEDITION® LE
900 ACE™ TURBO SHOWN



4 RAS™ 3 front suspension

Similar geometry and steering to the RAS 3 mountain front end for capability and light steering feel on- and off-trail. Optimized for crossover usage, two ski stance positions dial in handling: 40.2 in. [102 cm] or 38.4 in. [97.5 cm].



5 20" wide track

Superb flotation and towing capability.



6 Multi-LinQ plate

Standard LinQ adaptable storage. Fits 16- and 20-inch-wide LinQ accessories to maximize accessory options. Up to 125 lb [56.7 kg] of cargo capacity.

ski-doo

